



11SM23-T



Actual product appearance may vary.

SM Series Subminiature Basic Switch, Single Pole Double Throw (SPDT), 125 Vac, 1 A, Pin Plunger Actuator, Solder Termination

Features

- Long operating life
- Elongated mounting hole for easier, more accurate mounting
- Choice of actuation (plunger, as well as a variety of integral and auxiliary actuators)
- Choice of electrical termination (solder, quick connect, PCB)
- Choice of operating characteristics (sensitive differential travel as low as 0,0254 mm [0.001 in] maximum, low operating force to 0,56 N [2.0 oz] maximum)
- Optional series constructions available (gold contacts for low energy switching, bifurcated gold contacts for maximum reliability, power load switching capability to 11 A)
- MIL-PFR-8805 qualified listings available

Description

MICRO SWITCH™ SM Series subminiature basic switches are used for simple or precision on/off application needs. The MICRO SWITCH™ SM Series switches are slightly larger than the MICRO SWITCH™ SX Series switches. These switches combine small size and light weight with ample electrical capacity, precision operation and long life.

Potential Applications

- Aerospace
- Instrumentation
- Appliances
- Vending machines
- Timing devices
- Office equipment
- Computer/business equipment
- Test instruments
- Medical/dental equipment
- Communications equipment
- HVAC equipment
- Manually operated devices
- Valves

Product Specifications	
Switch Type	MICRO SWITCH™ Subminiature 12,7 mm H x 6,35 mm W x 20,3 mm L [0.5 in H x 0.25 in W x 0.8 in L]
Sealed	No
Ampere Rating	1 A
Circuitry	Single Pole Double Throw (SPDT)
Actuator	Pin Plunger
Termination	Solder
Operating Temperature Range	-55 °C to 125 °C [-67 °F to 257 °F]
Voltage	125 Vac
Approvals	CE,CSA,UL,ENEC
Contact Type	Gold-plated
Operating Force (O.F.)	0,83 N - 1,39 N [3.0 oz - 5.0 oz]
Release Force (R.F.)	0,28 N [1.0 oz] min.
Pretravel (P.T.)	0,5 mm [0.020 in] max.
Overtravel (O.T.)	0,13 mm [0.005 in] min.
Differential Travel (D.T.)	0,1 mm [0.004 in] max.
Operating Position (O.P.)	8,38 mm ± 0,38 mm [0.330 in ± 0.015 in]
Housing Material	General Purpose Phenolic
High Temperature	204 °C [400 °F]
CE mark	61058-1
UL File #	E12252
CSA File #	LR41372
Agency Approvals and Standards	1054
Mounting Centers	9,65 mm [0.38 in]
Maximum Tightening Torque	0,26 N m [2.3 in lb]
Weight	2,72 g [0.006 lb]
Package Height	12,4 mm [0.49 in]
Package Width	6,35 mm [0.25 in]
Package Length	19,8 mm [0.78 in]
Recommended For	Application requiring gold contacts
Comment	Turret type solder terminals.
Availability	Global
UNSPSC Code	30211905
UNSPSC Commodity	30211905 Snap switches
Prod Code (Stock No.)	NA
Series Name	SM



MICRO SWITCH

FREEPORT, ILLINOIS, U.S.A.
A DIVISION OF HONEYWELL

FED. MFG. CODE 91929

SWITCH - BASIC

CATALOG LISTING
11SM23-T

DRAWING NUMBER
11SM23-T

ISSUE
M

6

REVISIONS

A	CO22077	GCH	8 DEC 66
B	CO29449	SRH	24 FEB 72
C	CO 39105	GLH	22 SEPT 77
D	CO-82803-E	DLT	8 JAN 97
E	CO-95172	JJA	17 JUNE 99

REPLACES

RELEASE NO.

CHECK

CHECK

DEC

DEC

DEC

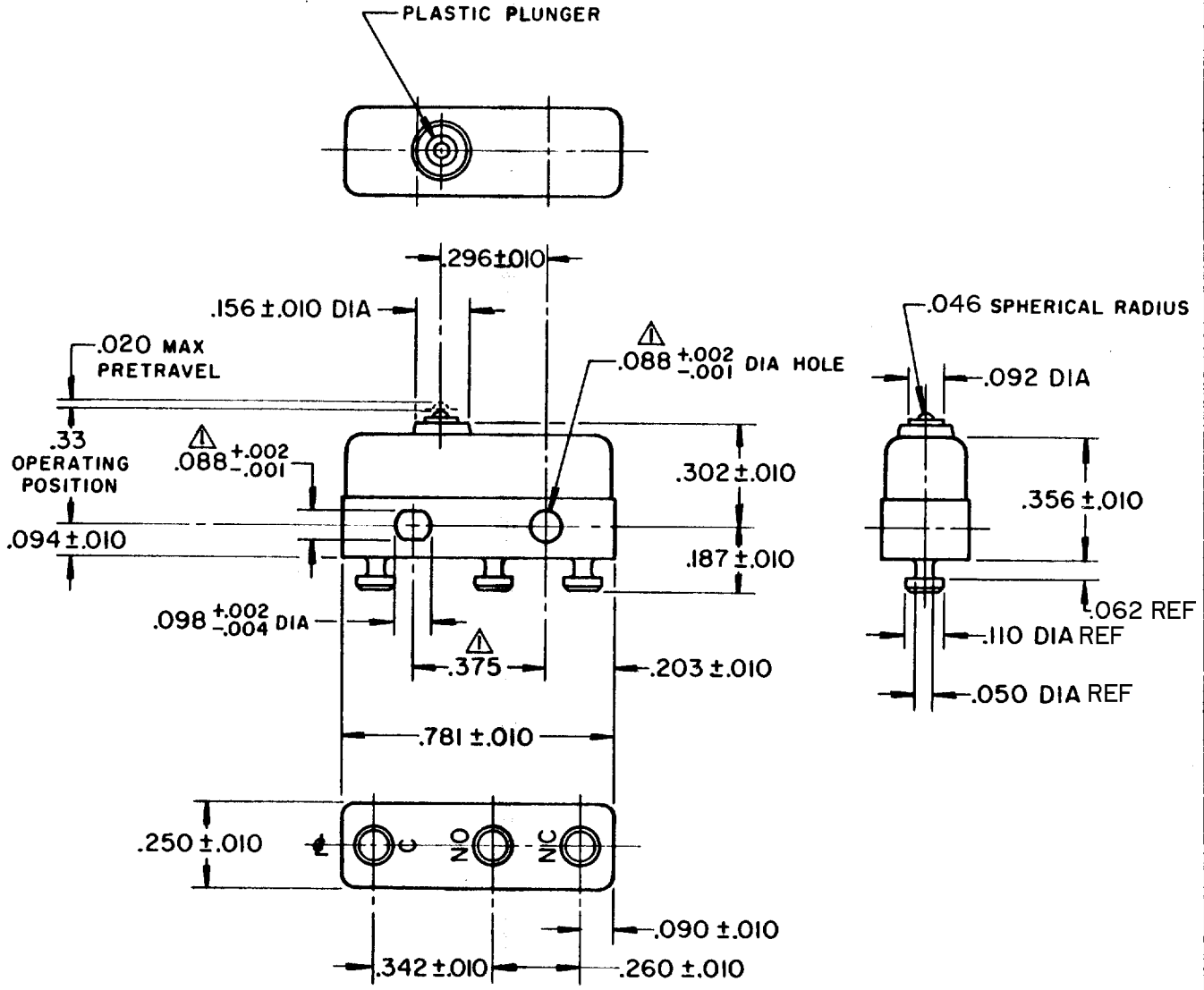
CHECK

DEC

DEC

DEC

DEC



NOTE--
 ▲-MOUNTING HOLES WILL ACCEPT PINS OR SCREWS OF .087 MAX DIA ON .375 ±.002 CENTERS
 2-TERMINALS ARE PLATED FOR SOLDERING
 3-MATING CONTACT SURFACES ARE 24K SOLID GOLD OVERLAY

THIS DRAWING COVERS A PROPRIETARY ITEM AND IS THE PROPERTY OF MICRO SWITCH, A DIVISION OF HONEYWELL. THIS DRAWING IS NOT TO BE COPIED OR USED WITHOUT THE APPROVAL OF MICRO SWITCH.

CHARACTERISTICS	OPERATING FORCE ----- 3-5 OZ	ELECTRICAL DATA	SCALE 2 TO 1
	RELEASE FORCE ----- 1 OZ MIN		DO NOT SCALE PRINT
DIFFERENTIAL TRAVEL ----- .004 MAX	OVERTRAVEL ----- .005 MIN	CONTACT ARRANGEMENT S P D T	UNLESS OTHERWISE NOTED DIMENSIONS ARE IN INCHES TOLERANCES ARE: ONE PLACE (.0) ±.030 TWO PLACE (.00) ±.015 THREE PLACE (.000) ±.005 ANGLES ±
		30 VOLTS DC RATING INDUCTIVE ----- SEA LEVEL ----- 1/2 AMP 50,000 FT ----- 1/2 AMP RESISTIVE ----- SEA LEVEL ----- 1 AMP 50,000 FT ----- 1 AMP MAXIMUM INRUSH ----- 2 AMP	
		WEIGHT .006 LB MAX	

FORMTEK
FO-90378
DRAWN
GCH 8 DEC 66